



EXTENDED AFFILIATE MARKETING PROGRAM

Compensation plan

DIRECT MARKETING BONUS

15%

from contribution according to selected package of each new Participant of Extended Affiliate Marketing Program



START UP MARKETING BONUS

10%

from contribution according to selected package of each new Participant of Extended Affiliate Marketing Program





ASSISTANT **3%**



MANAGER **5%**



SR.MANAGER **7%**



MASTER **10%**



SR.MASTER **12%**



EXECUTIVE **15%**



FOUNDER
EXECUTIVE
17%



CONSUL
20%



FOUNDER
CONSUL
22%



AMBASSADOR
25%



FOUNDER
AMBASSADOR
27%



CHIEF
AMBASSADOR **30%**

DEPTH BONUS

3%

starting from 3rd downline



DEPTH BONUS

5%

starting from 3rd downline



DEPTH BONUS

7%

starting from 3rd downline



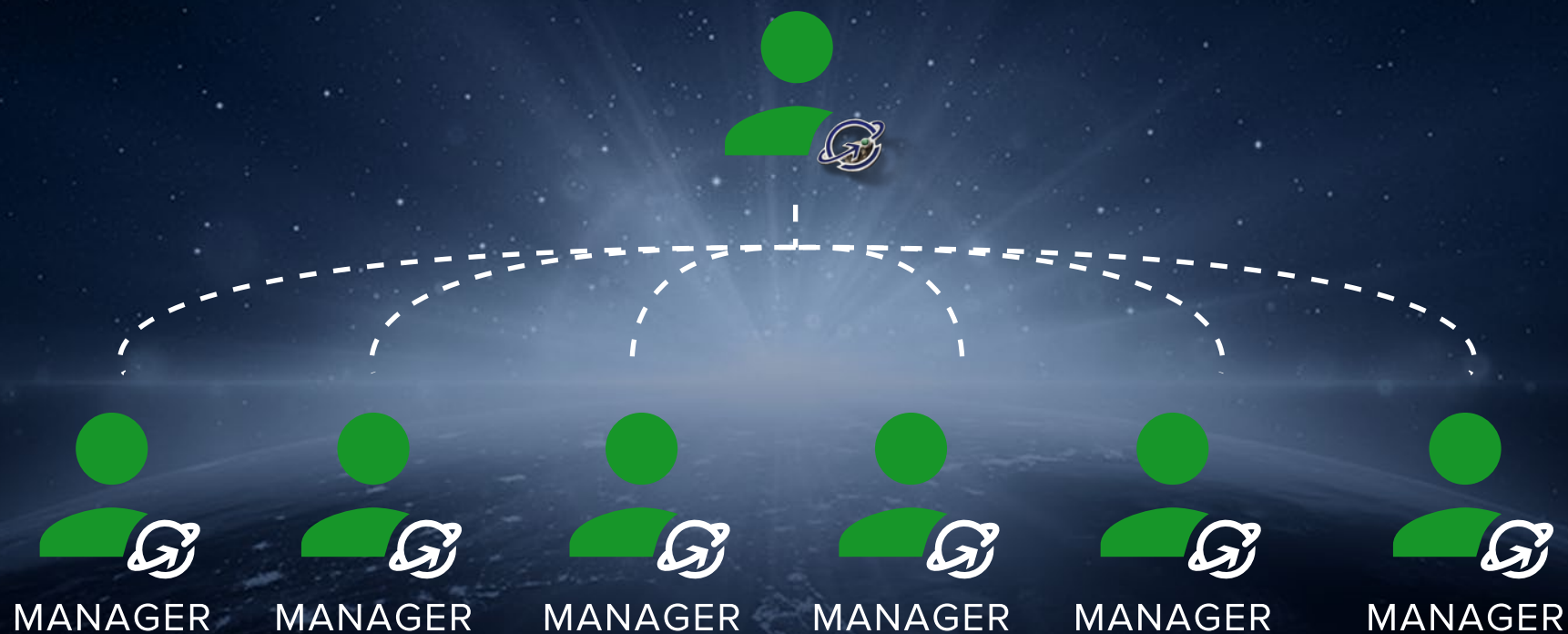
DEPTH BONUS

10% starting from 3rd downline



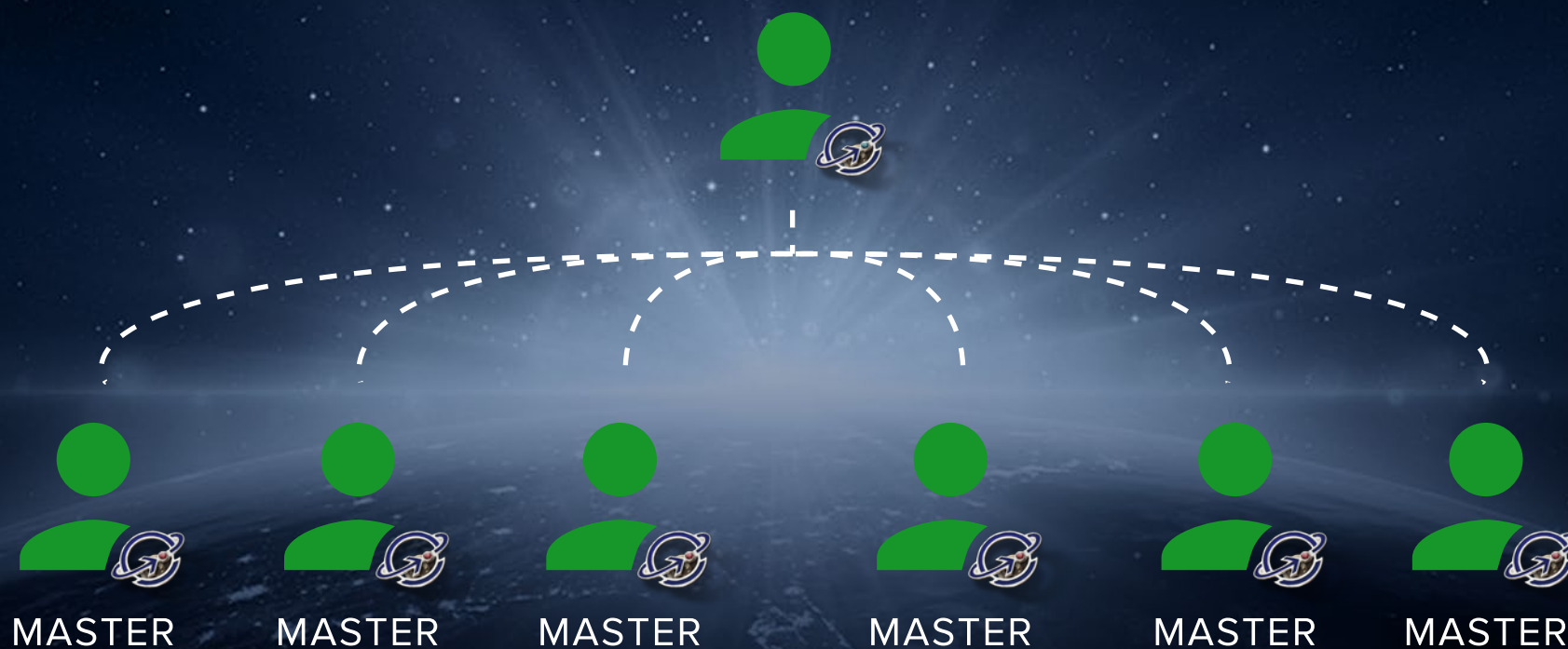
DEPTH BONUS

12% starting from 3rd downline



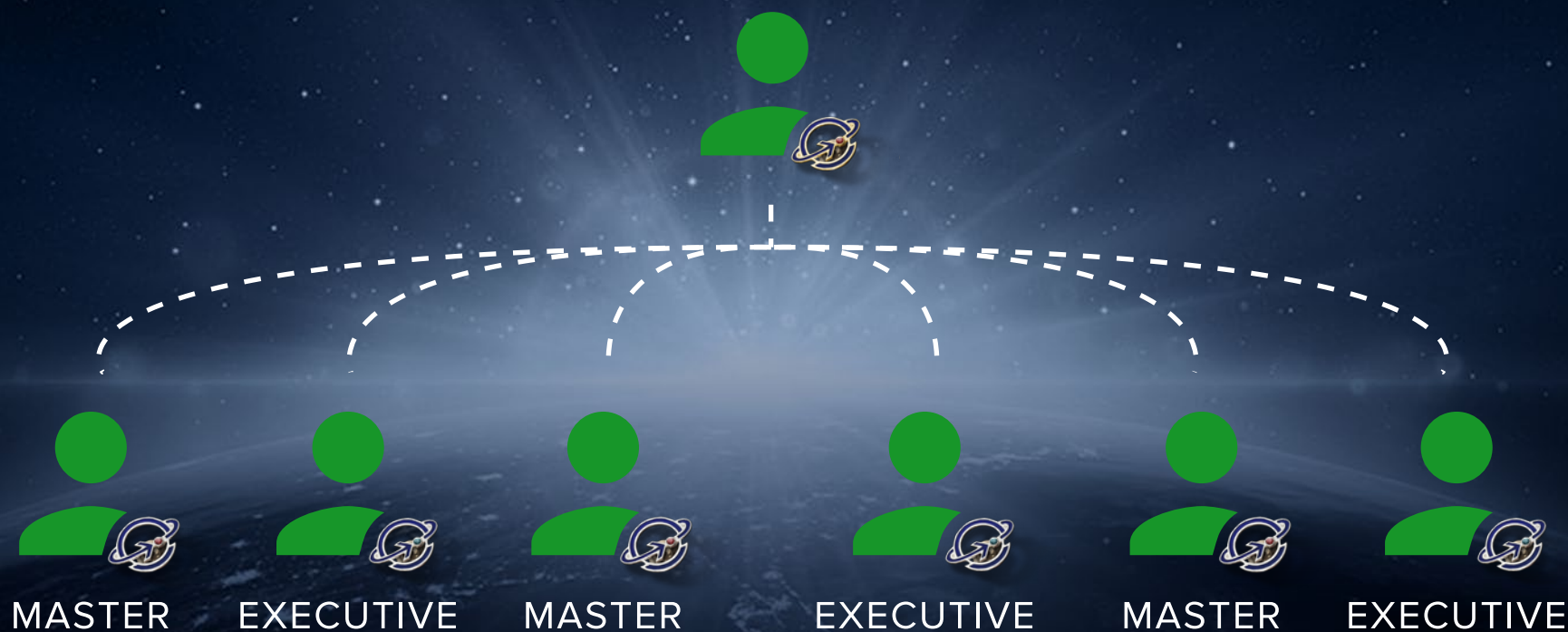
DEPTH BONUS

15% starting from 3rd downline



DEPTH BONUS

17% starting from 3rd downline



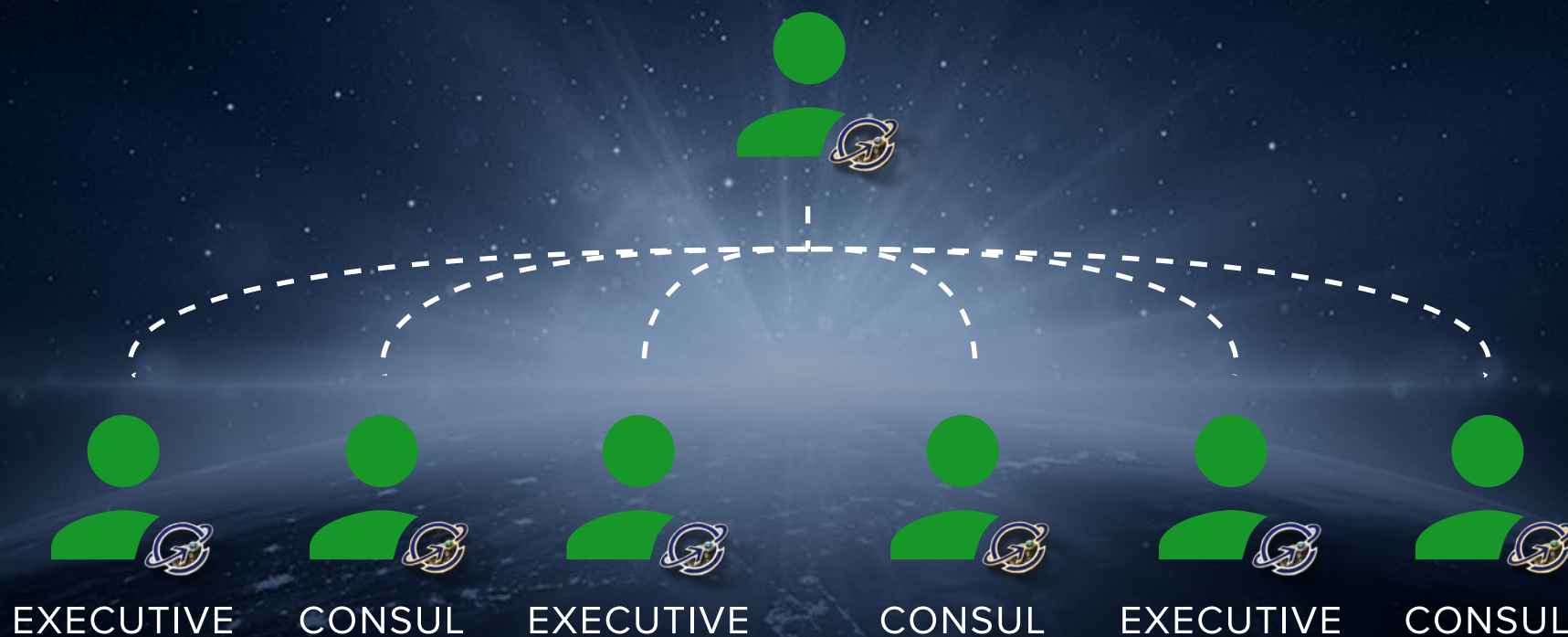
DEPTH BONUS

20% starting from 3rd downline



DEPTH BONUS

22% starting from 3rd downline



DEPTH BONUS

25% starting from 3rd downline



DEPTH BONUS

27% starting from 3rd downline



**DEPTH
BONUS**

30% starting from 3rd downline



AMBASSADOR AMBASSADOR AMBASSADOR AMBASSADOR AMBASSADOR AMBASSADOR

MATCHING BONUS

1%

from base referral income
starting from the EXECUTIVE level

It is calculated for the previous reporting period,
with 5th downline, compressing inactive partners.

LEADER SUPPORTING BONUS

1%

from the turnover of the partners' branches
starting from the EXECUTIVE level

2%

from the turnover of the partners' branches
starting from the CONSUL level

Paid from the partners' branches with career level not lower than the leader and not given to gain own career level.

It is calculated for the previous reporting period, with 5th downline, compressing inactive partners.

GENERATION BONUS

1%

from the turnover of the 2 strongest branches
within the structure starting from the CONSUL level

In case the turnover of these branches
does not exceed 70% of the leader's
total turnover.

WORLD POOL BONUS

1% of the global quarterly turnover

Distributed every 4 months among the most successful partners depending on their contribution to the turnover.